

PRODUCT INFORMATION

VERSAMAT®



VersaMat® Insulation is a family of polyester (PET) products engineered for advanced thermal and acoustic insulating applications. In addition to the wide range of fiber blends, *VersaMat* can be combined with films, foils, and scrims to further enhance its physical properties.

VersaMat Insulation has excellent flammability ratings and is suited for applications up to 325° F. *VersaMat* can be die-cut, thermally molded, or supplied in rolls and boards.

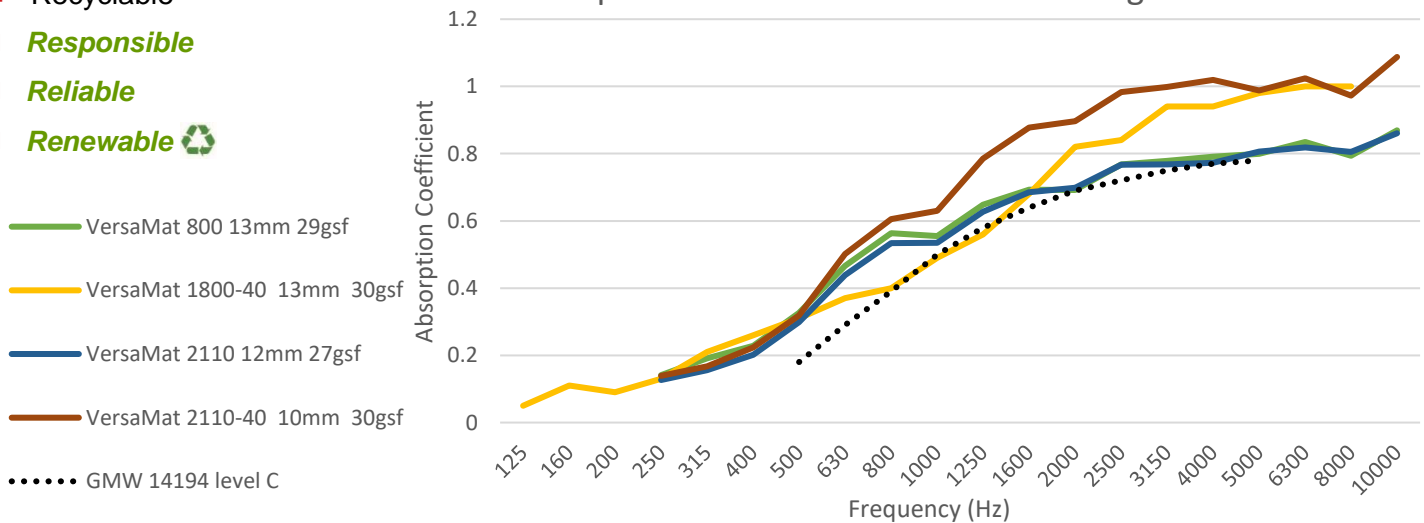
Current markets utilizing *VersaMat Insulation* include transportation, appliance, commercial interiors, HVAC, marine, and many others.

Unique Properties

- Exceptional Acoustic Absorption
- Flame Resistant
- Mildew and Bacteria Resistant
- Commercially Odorless
- Chemical Free
- Hypoallergenic
- High Flexibility
- Moldable
- Recyclable
- **Responsible**
- **Reliable**
- **Renewable** 

Physical Properties	Value
Density Range (GSM)	220-1000
Thickness Range (mm)	10-65
Color	White, Gray, Black
Thermal Properties	Value
Max Soak Temperature (°C)	93.3
R-Value@ 485GSM 25.4mm	2.50
Flammability	Value
FMVSS302	Pass
Blend Composition	Material
VersaMat	PET Staple Fiber, and PET Binder Fiber

Alpha Cabin: GMW 14194 Level C Target vs VersaMat



This information is offered solely as a guide in the selection of a product. The information contained in this publication is based on actual laboratory data and field test experience. We believe this information to be reliable, but do not guarantee its applicability to the user's process or assume any responsibility or liability arising out of its use or performance. The user, by accepting the products described herein, agrees to be responsible for thoroughly testing any application to determine its suitability before committing to production. It is important for the user to determine the properties of its own commercial compounds when using this or any other reinforcement. Because of numerous factors affecting results, we make no warranty of any kind, express or implied, including those of merchantability and fitness for a particular purpose. Statements in this data sheet shall not be construed as representations or warranties or as inducements to infringe any patent or violate any law, safety code or insurance regulation.

Indratech
 1212 Maple Road
 Troy, MI 48083
 P: 248.377.1877
 F: 248.377.1889

Indratech of Indiana (IOI)
 2200 W. Lusher Ave.
 Elkhart, IN 46517
 P: 574.293.1877
 F: 574.293.3611

Indratech of Indiana (I2)
 3733 Lexington Park Dr.
 Elkhart, IN 46514
 P: 574.326.3706
 F: 248.377.1889

Indratech of Kentucky (IOK)
 2801 Constant Comment Dr. Suite D
 Louisville, KY 40299
 P: 502.653.6500
 F: 502.261.8480